



QuickFrame™ Rough Opening System eliminates the need for multiple piece headers, jambs, and sills. Now a single QuickFrame member can replace built-up headers and jambs reducing jobsite labor assembly time by more than 50%. Our QuickFrame Header, Jamb and Sill can be put together “quickly” with an easy to use clip for faster installation.



JoistRite® (US Patent No. 7,765,771) is a specially designed, patented, cold-formed steel “C” section that has the highest strength-to-mass ratio available in the industry. Excellent fire and acoustic properties add to the list of traits that make this product absolutely unique. Large triangular knock outs allow easy installation of wiring, conduits, plumbing and heating ducts without the need for cutting or drilling holes. JoistRite® is manufactured to length in the plant, minimizing the need for on-site cutting and labor.



Narrower Walls – More useable square feet  
Lower Material Costs – NO, CRC, Thinner Steel, Smaller Web  
Faster Build-out – Single Wall Installation  
STC-Equal or Better  
1 & 2 HOUR Fire Rating UL V463, W475  
Available in 3 5/8”, 4”, and 6” Wall Assemblies



StudRite® has one of the best strength-to-mass ratios of any stud in the industry. It can be used to frame interior bearing and non-bearing walls, as well as exterior walls without limitations, including low rise bearing, high rise non-bearing and pre-fabricated wall panels.

**FIRE STOPPING**



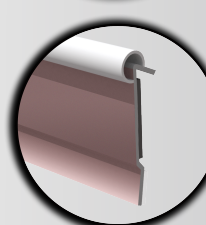
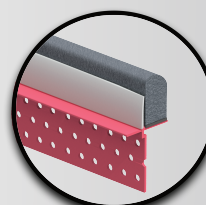
A fire rated wall mount deflection bead that provides 1- and 2-hour fire-ratings for both dynamic and static joints according to UL-2079 5th Edition (for both standard walls and shaft walls) and is sound tested according to ASTM E90.



A compressible intumescent fire-stopping that provides 1 and 2 Hour fire-ratings for both dynamic and static joints according to UL-2079 5th Edition (for both standard walls and shaft walls) and is sound tested according to ASTM E90, tested up to a STC 68.



A fire rated composite vinyl intumescent accessory that provides 1 & 2 Hour fire-ratings for both dynamic and static joints for both concrete and fluted deck assemblies, according to UL-2079 5th Edition.



**Contact a KAMCO  
Sales Representative  
for pricing and availability**

**Brooklyn - 718-768-1234  
Manhattan - 212-736-7350  
Long Island - 516-935-8660**

**Kamco Supply of NJ, LLC  
973-247-1234**

**info@kamco.com**